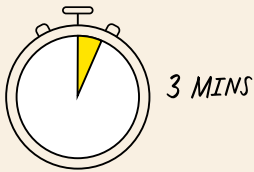




# Cognitive screening made simple

Quickly and easily check cognitive health, regardless of device or location – in as little as 3 minutes.



## Power proactive care with streamlined screening

With cognitive impairment increasing in a growing aging population, early detection is key to unlocking opportunities to preserve brain health.<sup>3</sup>

BrainCheck Screen equips providers with a proven tool to set a baseline, stratify individual risk, and establish medical necessity for further testing, if needed.

Delivering accurate and actionable insights, BrainCheck Screen empowers clinicians ranging from primary care to specialists to accelerate intervention, increase efficiency, and personalize care.

### Key Benefits

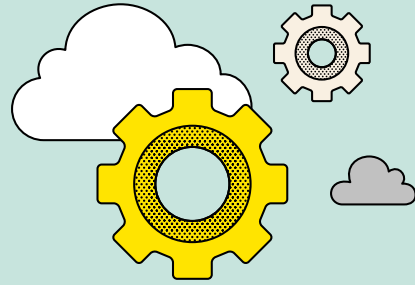
- ✓ Digital tool
- ✓ Easy-to-use
- ✓ Clinically validated<sup>1</sup>
- ✓ Any device, any location
- ✓ Remote testing
- ✓ EHR integration<sup>2</sup>
- ✓ Establishes medical necessity





## Reliable tools, reimagined

Revolutionize cognitive care with a subset of clinically-validated digital versions of familiar screeners, precisely measuring performance across a range of cognitive domains and tracking changes over time.



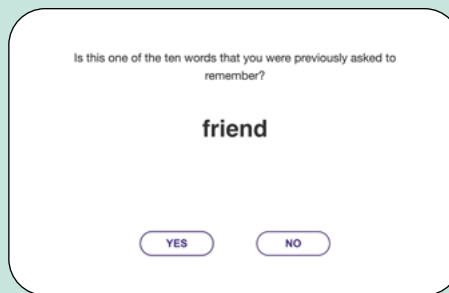
### Processing Speed

Digit Symbol Substitution



### Memory

Immediate & Delayed Reconciliation



## High sensitivity for high stakes screening

Maximizing the window of intervention for cognitive impairment empowers providers and patients with more options and opportunities to preserve brain health.

Scientifically validated, **BrainCheck Screen** offers high sensitivity, ensuring minimal missed cases, confident decision making, and enhancing proactive care.<sup>1</sup>

### BrainCheck Screen™

Identifying impairment<sup>1</sup>

**92%**  
sensitivity

**74%**  
specificity

**References:** 1. BrainCheck Screen Validation. (2023). Accessible via BrainCheck.com. 2. Some feature availability determined by EHR integration. 3. Mattke S, et al. 2023. Expanding the use of brief cognitive assessments to detect suspected early-stage cognitive impairment in primary care. *Alzheimer's and Dementia*. 19(9)4252-4559. <https://doi.org/10.1002/alz.13051>

**Warning:** BrainCheck Assess is an FDA Class II Medical Device. The device should be interpreted only by qualified healthcare professionals. The device is not intended to be used as a stand-alone diagnostic device. The device is not intended to identify the presence or absence of clinical diagnosis. BrainCheck Screen, BrainCheck Plan and screeners are not regulated devices, but may be used alongside BrainCheck Assess to support clinical decision making in evaluating cognitive status.